

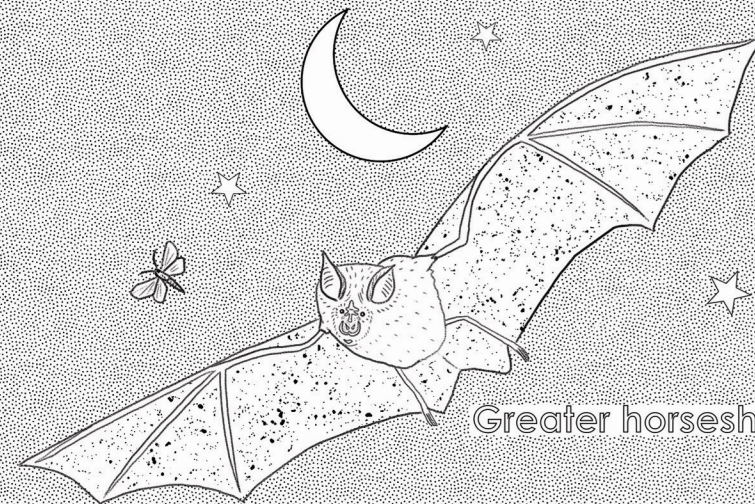
# Coombe Bissett Down at night

More than 100 species of moth have been recorded at Coombe Bissett Down, most of which are night-flying.

Moths are important pollinators and prey for animals like bats.



Common pipistrelle

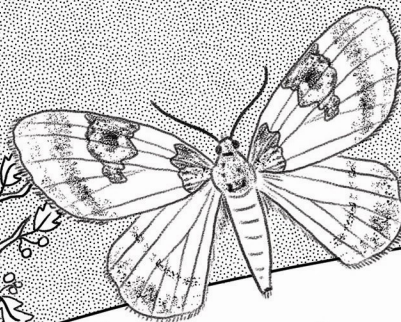


Greater horseshoe



Large yellow underwing

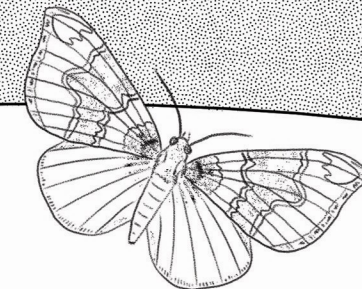
Common emerald



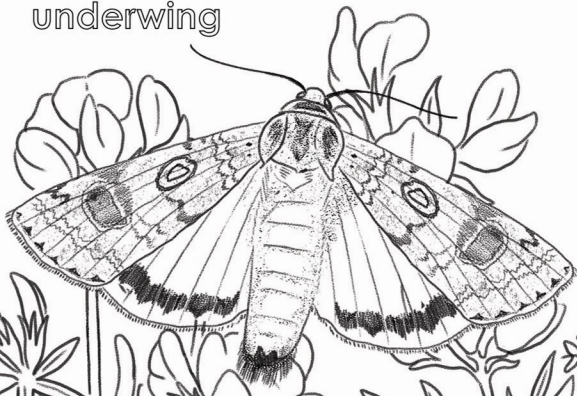
Blue-bordered carpet



Privet hawkmoth



Barred yellow



Elephant hawkmoth



Yellow shell



Swallowtail moth

