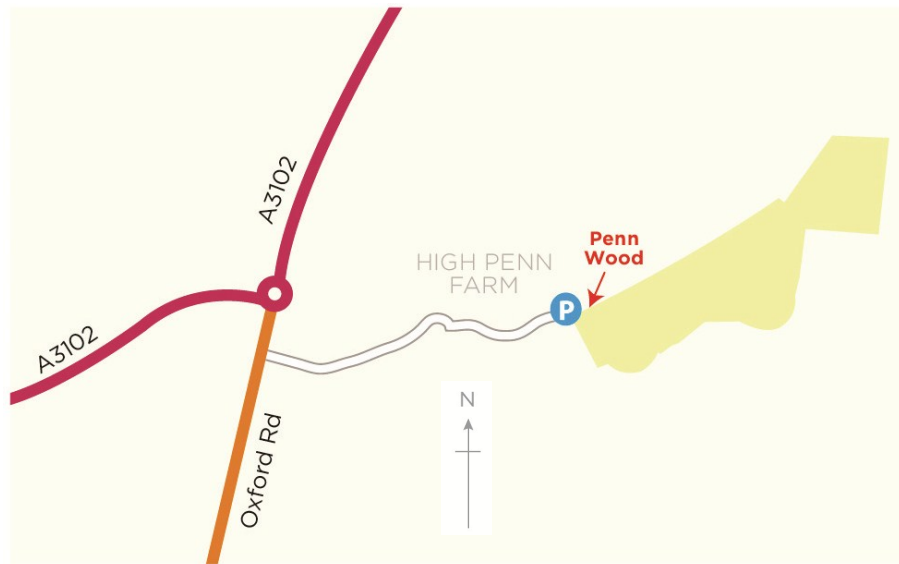


# Penn Wood



## Location

**Postcode** SN11 8RU **Grid Ref** SU012728

**Access** – Main access is from the Oxford Road and is wheelchair-friendly. Car parking is limited. A stile on the northern side of the reserve allows access from the nearby footpath. Dogs on leads are welcome.

**Nearby reserves** – Morgan's Hill

**What to see locally** – Bowood House and Gardens (2 miles), Cherhill White Horse (5 miles), West Kennet Long Barrow (7 miles), Avebury (9 miles)

**If driving** – From Calne town centre take Oxford Road towards Swindon. On A3102 from Swindon, take 'Town Centre Only' into Calne. Turn into High Penn - a track leading uphill. Follow the track uphill to the car park.

**If using bus** – bus 55 Swindon to Chippenham. About a 15 minute walk from the bus stop outside Calne Veterinary Clinic heading north on Oxford Rd. Before the roundabout turn right onto High Penn, continuing all the way to the end of the road, past all the houses. Reserve is on right. Visit [www.wiltshire.gov.uk/parkingtransportandstreets](http://www.wiltshire.gov.uk/parkingtransportandstreets)

**If cycling** – Visit [www.sustrans.org.uk](http://www.sustrans.org.uk)

## About Wiltshire Wildlife Trust

Our vision is to create a county rich in wildlife and help people live sustainable lifestyles that protect the environment for the benefit of everyone.

We have about 18,500 members, look after almost 40 nature reserves, are supported by hundreds of volunteers, and work with local communities, schools, businesses and public bodies to achieve our aims. To do all this we rely on the support of our members.

If you would like to join us, or to find out about how you can help the environment, please visit [www.wiltshirewildlife.org](http://www.wiltshirewildlife.org)

Wiltshire Wildlife Trust Ltd. Elm Tree Court,  
Long Street, Devizes, Wiltshire SN10 1NJ.  
(01380) 725670  
[info@wiltshirewildlife.org](mailto:info@wiltshirewildlife.org)

 Join us on **Facebook.com/WiltsWild**

 Follow **@WiltsWildlife**

Registered charity no. 266202.

Front cover: Toad, Amy Lewis



## Penn Wood

### Calne 7.7 hectares

This new nature reserve has seen many transformations in its history since it was farmland.

It was bought by The Hills Group in the 1930s to be worked as a sand quarry and then used as an inert landfill site (holding materials such as bricks and rubble) until the 1950s. Following this it was restored to pasture for grazing livestock.

In June 2003 we worked with Hills Homes to relocate 500 **slow worms** from Newcroft Garden allotments to Penn Wood to make way for a development.

### Wildlife

Hibernation mounds and heat traps were created for the slow worms, along with two ponds for frogs and **toads** - this area is now well established. Grass snakes and **southern marsh** and common spotted orchids are also regularly seen.

In 2010 we supported The Hills Group and local people in planting some of the 10,000 young blackthorn, oak, ash, lime, black poplar, downy birch and a few Norway spruce and Scots pine trees that make up the wood.

The blackthorn will encourage brown hairstreak butterflies to use the reserve as they lay their eggs on young blackthorn shoots, which is food for their larvae.

A variety of shrubs and wildflowers were mixed in to provide a rich source of food

and shelter for wildlife as well as nesting places for birds.

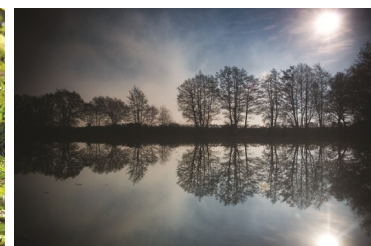
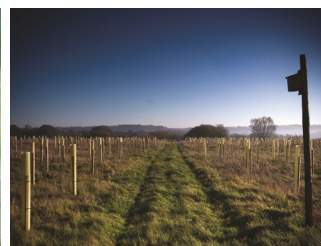
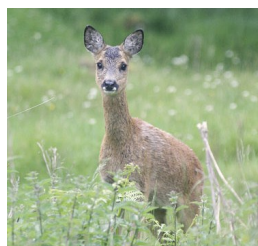
Wide rides (grass pathways) and the lake shores were left unplanted to balance the woodland with naturally growing bramble and hedgerows.

A fishing club uses the **private lake**.

Scattered between the saplings are poles where **kestrel**, buzzard and owls can perch and some of them have **bat boxes** attached.

**Roe deer** and badgers already use the site. Look up to see skylarks, lapwings and red kite.

At the entrance a wildflower meadow has been planted and will be cut annually for hay. This area will be monitored and further flower plugs will be planted if needed.



Slow worm, Bruce Shortland. Southern marsh orchid, Rob Large WWT. Kestrel, Darin Smith. Roe deer, Darin Smith. Bat box, Owain Shaw WWT. Toad, Joy Russell. High Penn lake view, Owain Shaw WWT